

Glass Recycling

A first class sustainable solution for glass

Your glass recycling

Did you know that a modern glass bottle could take over 4000 years to decompose if sent to landfill? Bywaters offer a strictly no waste to landfill solution to all of our waste streams. Glass is a material that can be recycled and reused infinitely and therefore has no real reason to end up in the wrong place.

Why single out glass?

Due to its weight, glass can significantly swell your waste disposal costs if it's placed in one of your non-recycling bins. By segregating glass into a stream of its own you can positively impact both your recycling figures and disposal costs. We offer innovative machinery to crush your glass, this not only optimises bin space but reduces collection costs and subsequent vehicle emissions.

Our service

Did you know in the UK, 5 out of every 6 glass bottles are thrown away? The energy saved from recycling just 1 of these bottles is enough to power a light bulb for four hours. To ensure no glass goes to waste we provide an efficient, reliable service from your door to ours. The service we provide is made possible by our state-of-the-art Euro 6 dustcart fleet. The vehicles in operation are the latest in a series of numbered emissions targets, designed to bring down carbon emissions and place the company well ahead of upcoming legislation, particularly London's Ultra-Low Emission Zone (ULEZ), in force from April 2019. Your glass waste is transported straight into our MRF, and bulked straight away with the remaining segregated glass waste onsite; then sent to one of our UK re-processors to be recycled into new products.

What makes us different?

Our service also boasts an environmental impact. The self-segregation of glass waste saves on MRF energy utilisation, resulting in reduced carbon emissions overall. When sent off it is then melted down and made into bottles where it can then be reused and stay in a constant cycle of reproduction. This is in favour of grounded aggregates for construction which stay in our environment for hundreds of years and only offer a one-time usage.

Glass process



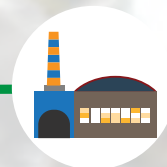
Mixed glass is collected



Any contamination is removed



Made into more glass products and aggregate



Sent to local processor for crushing